



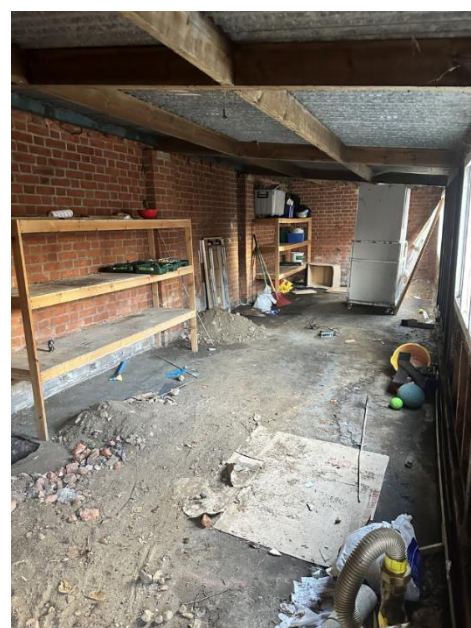
KS3 Shed to Gym Conversion Project - November 2023

Recognising exercise as part of a healthy lifestyle is both beneficial to body and mind. At our KS3 Centre, we decided to convert our storage shed into a state of the art fully equipped gym facility.

However, this has not been a straightforward project as our KS3 centre is in a conservation area and a lot of planning and design had to fit in with the listed status of the main building. Planning permission took almost 2 years to be agreed.

Construction is now underway and aims to be completed before Christmas this year. Our young people will then be able to enjoy this new facility in the new year.

Shed before construction started:



Removal of the cladding ready to be recycled:





Next stage was to lay the concrete base:



Next phase was to erect scaffolding ready for the additional brickwork:



More photos to follow as the project progresses ...